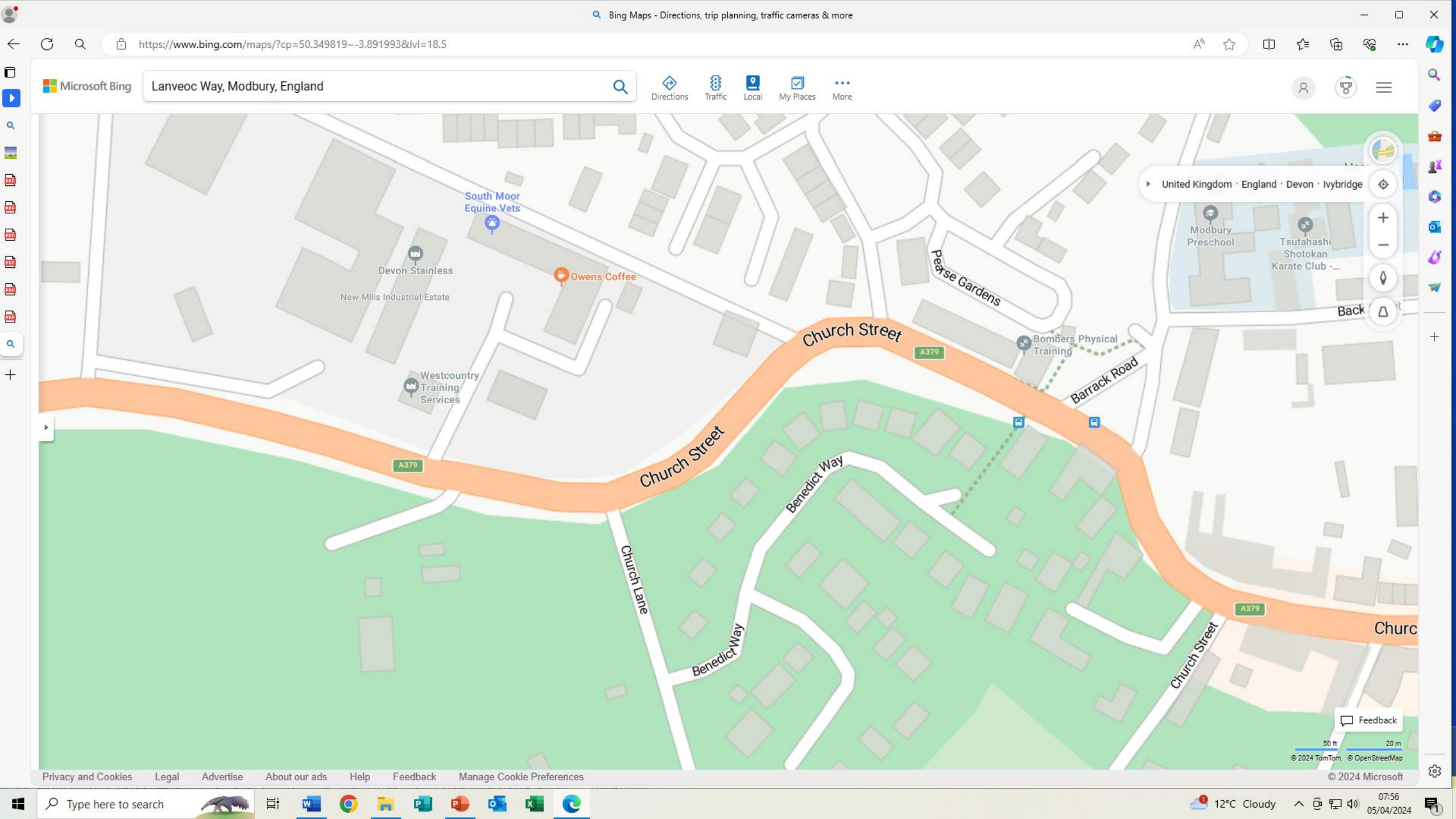


© Crown copyright and database rights 2023 Ordnance Survey 100030373

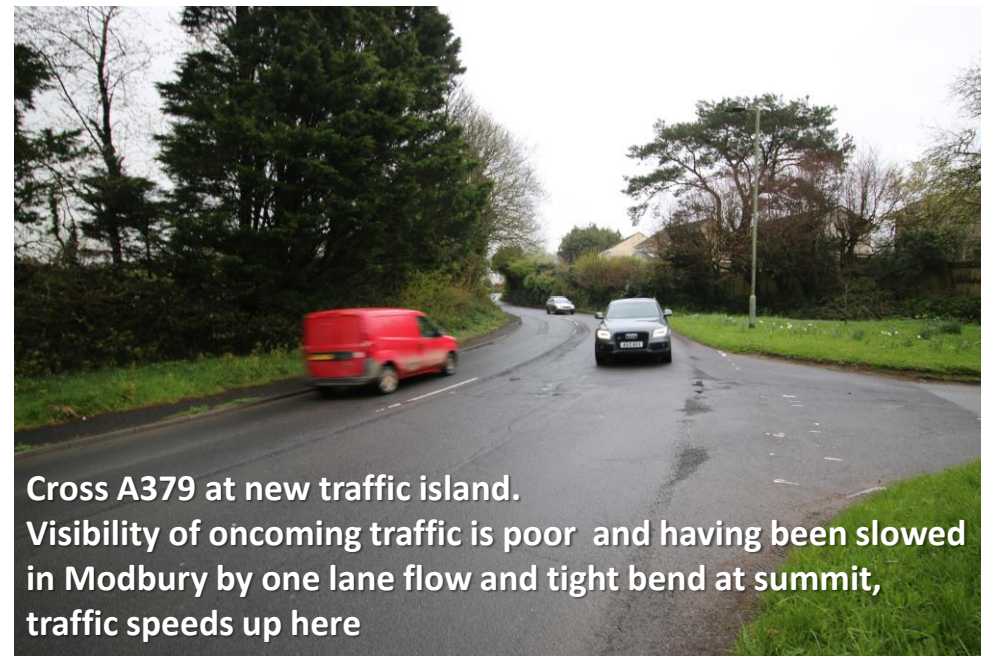
REV	NOTES	AUTH	DATE
1	Pennparks Farm, Modbury Site Constraints and Opportunities Plan	RM / GB	
220403 L 00 02	1:500 @ A1		Jan 2023

CliftonEmerydesign
Bristol • Exeter • London • Plymouth
www.cliftonemerydesign.co.uk mail@cliftonemerydesign.co.uk

Drawing Status: FOR INFORMATION



Navigating the proposed route from Pennparks to school and town centre





Turn into Benedict Way which has a footpath at the entrance. . .



. . . but no footpath at all further up



Access narrow footpath to main road



Path emerges onto main A379 at a busy junction with poor visibility of traffic from town due to blind bend.



The school is, temptingly, just across the road.
But you must turn away from it



Turn away from the town to this traffic island to
Cross the A379



Walk back towards the school on the other side of
the main road



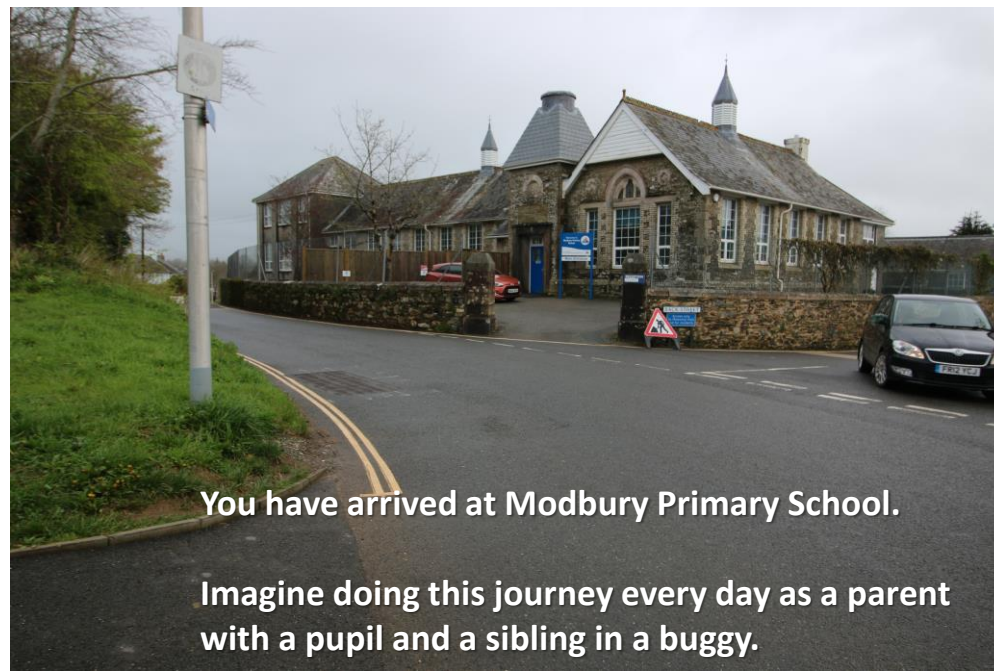
A footpath returns you to point opposite where you
first emerged from Benedict Way



Take the footpath towards the school. . .



Then cross a busy junction with poor visibility and traffic coming from FOUR DIRECTIONS and NO FOOTPATHS



You have arrived at Modbury Primary School.

Imagine doing this journey every day as a parent with a pupil and a sibling in a buggy.